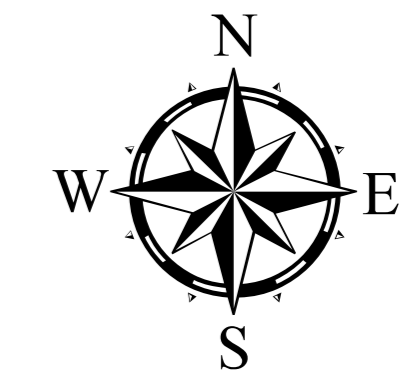


PROPOSED LANDUSE MAP - 2041

KUTTAM

TALUK : VEDASANDUR

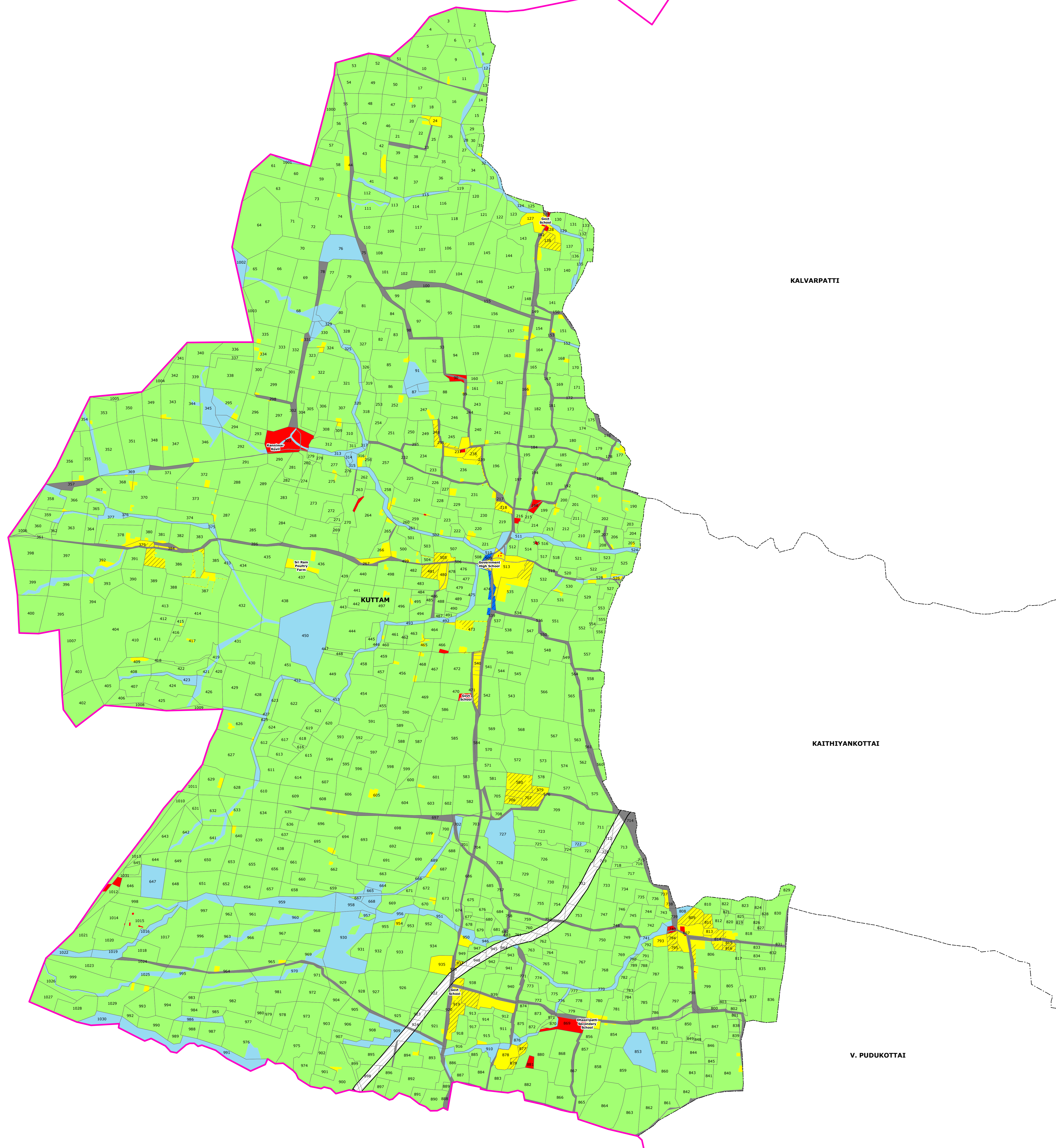
DINDIGUL LPA



Legend

- LPA BOUNDARY
- CORPORATION BOUNDARY
- TALUK BOUNDARY
- VILLAGE BOUNDARY
- SURVEY BOUNDARY
- NATIONAL HIGHWAYS
- STATE HIGHWAYS
- RAILWAY LINE
- RESERVED FOREST
- HILLOCK / QUARRY
- WATER BODIES

- | LANDUSE ZONE | EXISTING | PROPOSED |
|-----------------------------------|----------|----------|
| RESIDENTIAL | | |
| COMMERCIAL | | |
| INDUSTRIES | | |
| SPECIAL LAND HAZARDOUS INDUSTRIES | | |
| INSTITUTIONAL | | |
| OPEN SPACE & RECREATIONAL | | |
| AGRICULTURAL | | |
| PROPOSED ROADS | | |



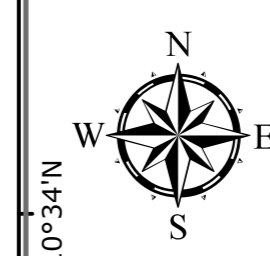
MEMBER SECRETARY / DEPUTY DIRECTOR (i/c),
DISTRICT TOWN & COUNTRY PLANNING OFFICE,
DINDIGUL DISTRICT.

DEPUTY DIRECTOR
TOWN & COUNTRY PLANNING,
CHENNAI.

JOINT DIRECTOR OF TOWN & COUNTRY PLANNING,
CHENNAI.

DIRECTOR OF TOWN & COUNTRY PLANNING,
CHENNAI.

ADDITIONAL CHIEF SECRETARY TO GOVERNMENT,
HOUSING AND URBAN DEVELOPMENT,
GOVERNMENT OF TAMILNADU.



SCALE: 1:10,200



PREPARED BY
DINDIGUL LOCAL PLANNING AUTHORITY,

DIRECTORATE OF TOWN
& COUNTRY PLANNING - TAMIL NADU.

