

PROPOSED LANDUSE MAP - 2041

BOODHIPURAM

TALUK : VEDASANDUR

DINDIGUL LPA



Legend

- LPA BOUNDARY
- CORPORATION BOUNDARY
- TALUK BOUNDARY
- VILLAGE BOUNDARY
- SURVEY BOUNDARY
- NATIONAL HIGHWAYS
- STATE HIGHWAYS
- RAILWAY LINE
- RESERVED FOREST
- HILLOCK / QUARRY
- WATER BODIES

LANDUSE ZONE	EXISTING	PROPOSED
RESIDENTIAL		
COMMERCIAL		
INDUSTRIES		
SPECIAL AND HAZARDOUS INDUSTRIES		
INSTITUTIONAL		
OPEN SPACE & RECREATIONAL		
AGRICULTURAL		
PROPOSED ROADS		

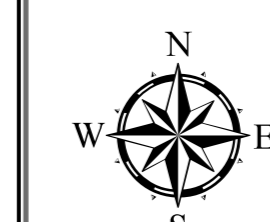
MEMBER SECRETARY / DEPUTY DIRECTOR (i/c),
DISTRICT TOWN & COUNTRY PLANNING OFFICE,
DINDIGUL DISTRICT.

DEPUTY DIRECTOR
TOWN & COUNTRY PLANNING,
CHENNAI.

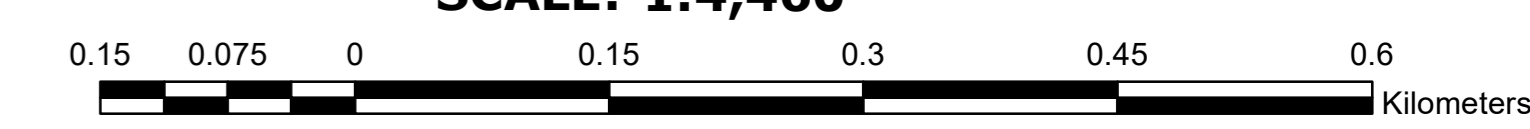
JOINT DIRECTOR OF TOWN & COUNTRY PLANNING,
CHENNAI.

DIRECTOR OF TOWN & COUNTRY PLANNING,
CHENNAI.

ADDITIONAL CHIEF SECRETARY TO GOVERNMENT,
HOUSING AND URBAN DEVELOPMENT,
GOVERNMENT OF TAMILNADU.



SCALE: 1:4,460



PREPARED BY
DINDIGUL LOCAL PLANNING AUTHORITY,

DIRECTORATE OF TOWN
& COUNTRY PLANNING - TAMIL NADU.

